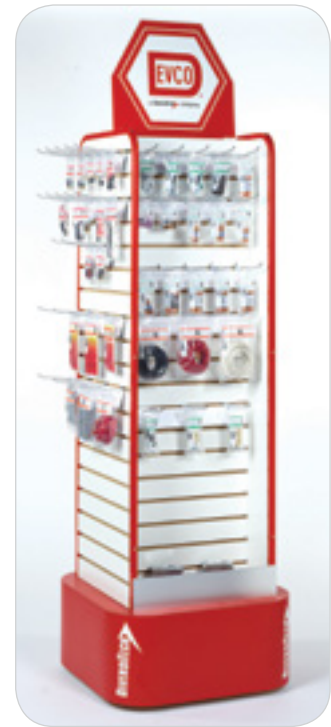
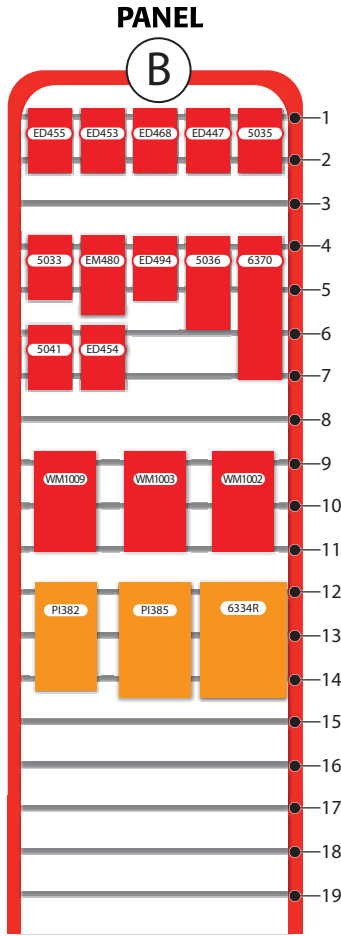
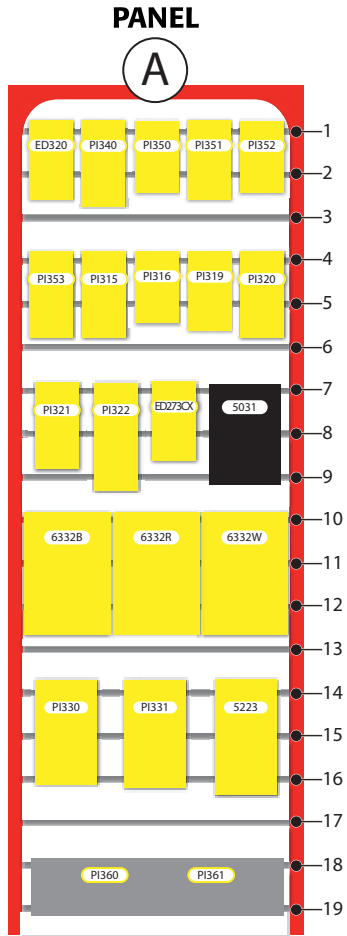
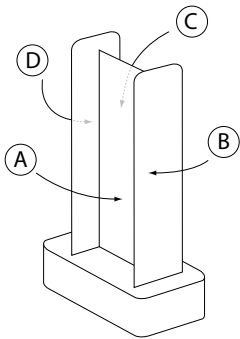
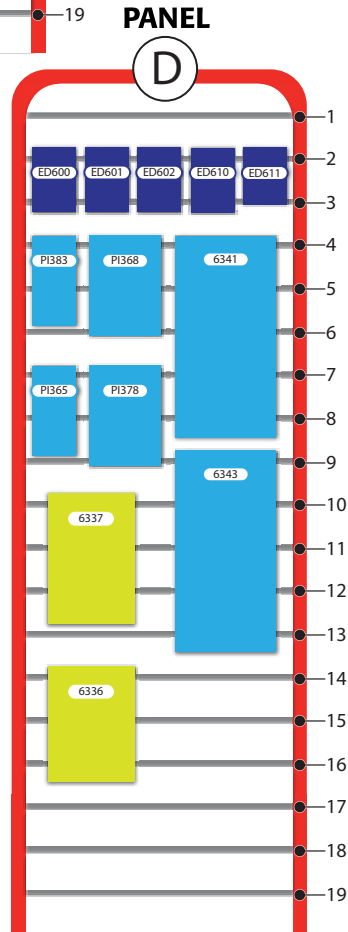
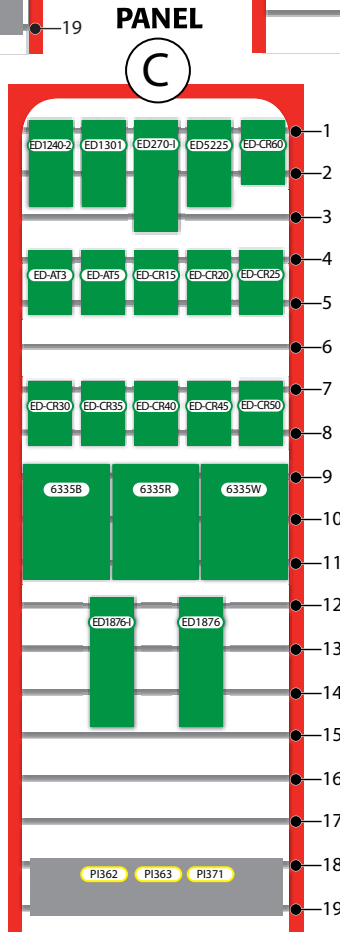




PLAN-O-GRAM FOR DEVCO ELEC RACK (MKT-POP-DEVELEC)



MKT-POP-DEVELEC



MKT-POP-DEVELEC  
Merchandising Rack  
72" x 22" x 20.5"

NOTE: Item numbers in RED indicate Made in the U.S.A.





## DEVCO RACKS MASTER ITEM LIST (BY RACK)

This DEVCO product list includes any DEVCO item that is part of the plan-o-gram display for either the EZC, ELEC or COMBO versions of the DEVCO rack. This cross reference indicates on which display rack each item should be placed.

ITEM #	ITEM DESCRIPTION	ELEC	EZC	COMBO	ITEM #	ITEM DESCRIPTION	ELEC	EZC	COMBO
5002	Crimp Tool w/ Cutter & Stripper Ins.		X	X	6703	Flat Washer 5/16in Uss zn Pltd.		X	
5031	Test Leads (ins. Alligator clips) Low Voltage 22in 8pcs	X	X		6704	Flat Washer 3/8in Uss zn Pltd.		X	X
5033	Alligator Clips (steel) 2in long for probes .075in-.08in	X			6706	Flat Washer 1/2in Uss zn Pltd.		X	
5035	Alligator Clips (copper) B&R Ins 2in long	X		X	6722	Fender Washer 1/4in zn Pltd.		X	X
5036	Test Clip (steel 20A) B&R Insulators 2-7/16in long	X		X	6724	Fender Washer 3/8in zn Pltd.		X	X
5041	Test Leads Low Voltage Hook Ty22ga 36in red & black	X			7033	Toggle Bolt w/wing 3/16inx4inzn Pltd.		X	
5223	Triple Outlet 2 Pole 3 Wire 15A-125V Polarized plastic	X			7034	Toggle Bolt w/wing 1/4inx4in zn Pltd.		X	
5381	Nylon Cable Clamp 1/8in I.D.		X		60210	Tab Ad. Ins. .250 16-14 multi stack male & female		X	X
5382	Nylon Cable Clamp 1/4in I.D.		X	X	60251	Slip-On F 12-10 Non-Ins. .250		X	X
5383	Nylon Cable Clamp 3/8in I.D.		X		60259HX	Comp. Lead Kit 12in 10ga wire		X	X
5384	Nylon Cable Clamp 1/2in I.D.		X	X	60264CX	Cable Tie 6in w/ #8 Hole 30# 1-3/8in B. Dia nat 100/PK		X	
6021	Rnd Head Screw (#6 8 10-32 x 1/2in 1-1/2in) zn Pltd.		X		60265LX	Cable Tie 14in 50# 4in B. Dia natural 50 pcs		X	
6101	Motor Shaft Keys (1/8in 3/16in 1/4in 3/16in x 1/4in) zn Pltd.		X		61233LX	Slip-on M & F 16-14 .250 Full Ins Nylon 50 pcs		X	X
6102	Motor Shaft Keys (1/4insq 5/16insq 3/8insq) zn Pltd.		X		6211CX	Tab Ad. S. F Dbl M Non-Ins. 100 pcs		X	X
6183	Terminal Block 20A-250V 6 pos			X	6213CX	Flag F QD 16-14 Non-Ins. .250 100 pcs		X	X
6185	Terminal Block 20A-250V 10 pos			X	6214CX	Slip-on F 16-14 Non-Ins. .250 100 pcs		X	X
6187	Terminal Block 20A-250V 14 pos			X	6216LX	Ring 16-14 Ins. #10 Stud 50 pcs		X	X
6211	Tab Ad. S. F Dbl M .250 Non-Ins.			X	6217CX	Butt Conn. 16-14 Ins. 100 pcs		X	X
6212	Dbl. M. Tab Ad. . S. F . Non-Ins.			X	6217LX	Butt Conn. 16-14 Ins. 50 pcs		X	X
6216	Ring 16-14 Ins. #10 Stud			X	6218LX	Slip-on F 16-14 Ins. .250 50 pcs		X	X
6218	Slip-on F 16-14 Ins. .250		X	X	6222LX	Dead End Conn. 22-14 Fully Ins. 50 pcs		X	X
6219	Slip-on M 16-14 Ins. .250		X	X	6223LX	Dead End Conn. 18-10 Fully Ins. 50 pcs		X	X
6224	Flag F QD 12-10 Non-Ins. .250		X	X	6227LX	Spade 16-14 Ins. #8 Stud		X	X
6229	Slip-on F 16-14 Full Ins. .250		X		6228LX	Spade 16-14 Ins. #10 Stud 50 pcs		X	X
6235	Slip-on F 22-18 Ins. .250		X	X	6229LX	Slip-on F 16-14 Full Ins. .250		X	X
6237	Spade 22-18 Ins. #8 Stud		X	X	6231LX	Butt Conn. 12-10 Ins. 50 pcs		X	X
6249	M Tab 1 pair bent 90 Non-Ins.			X	6232LX	Butt Conn. 22-18 Ins. 50 pcs		X	X
6251	Slip-on F 12-10 Ins. .250		X	X	6233LX	Slip-on F 16-14 .250 Full Ins. Nylon 50 pcs		X	X
6252	Ring 12-10 Ins. #10 Stud		X	X	6234LX	Slip-on M 16-14 .250 Full Ins. Nylon 50 pcs		X	X
6253	Ring 12-10 Ins. 1/4in Stud		X	X	6235LX	Slip-on F 22-18 Ins. .250 50 pcs		X	X
6255	Spade 12-10 Ins. #10 Stud		X	X	6236LX	Ring 22-18 Ins. #8 Stud 50 pcs		X	X
6258	Comp. Flag F. 16-14 Non-Ins. .250		X	X	6239LX	Spr. Spade 16-14 Ins. #8 Stud		X	X
6259	Comp. Flag F. 12-10 Non-Ins. .250			X	6251LX	Slip-on F 12-10 Ins. .250		X	X
6269	Cable Tie Mount		X		6252LX	Ring 12-10 Ins. #10 Stud		X	X
6270	Comp. Flag F. 12-8 Non-Ins. .250		X	X	6255LX	Spade 12-10 Ins. #10 Stud 50 pcs		X	X
6272	Ring 16-14 Ins. #6 Stud			X	6257NX	Ring #8 Ins. 1/4in Stud 25 pc		X	X
6274	Spade 16-14 Ins. #6 Stud		X		6258CX	Comp. Flag F. 16-14 Non-Ins. .250 100 pcs		X	X
6276	Spr. Spade 16-14 Ins. #6 Stud		X	X	6259CX	Comp. Flag F. 12-10 Non-Ins. .250 100 pcs		X	X
6281	Slip-on F 16-14 Ins. .187		X	X	6261CX	Cable Tie 6in 18# 1-3/8in B. Dia natural 100 pcs		X	X
6282	Slip-on F 22-18 Ins. .187		X		6262CX	Cable Tie 7-1/2in 50# 1-3/4in B. Dia natural 100 pcs		X	X
6291	Wire Connector Mini-Gray		X	X	6263CX	Cable Tie 11in 50# 3in B. Dia natural 100 pcs		X	X
6292	Wire Connector Tiny-Blue		X	X	6263BCX	Cable Tie 11in 50# 3in B. Dia black 100 pcs		X	
6293	Wire Connector Small-Orange		X	X	6264CX	Cable Tie 7in w/ #10 Hole 50# 1-3/4in B. Dia nat 100/PK		X	X
6294	Wire Connector Medium-Yellow		X	X	6269LX	Cable Tie Mount 50 pcs		X	
6296	Wire Connector Large-Red		X	X	6270LX	Comp. Flag F. 12-8 Non-Ins. .250 50 pcs		X	X
6298	Wire Connector XLarge-Gray		X		6277NX	Flag F QD 16-14 .250 Fully Ins. Nylon 25 pcs		X	X
6336	Thermostat Wire 3 Conduct. 40 ft.	X			6281LX	Slip-on F 16-14 Ins. .187 50 pcs		X	X
6337	Thermostat Wire 5 Conduct. 40 ft.	X			6289LX	Bullet Plug & Rec. 16-14 Ins. 50 pcs		X	X
6341	SJTO Service Cord 16 GA 20 ft.	X	X		6295X	Assorted Wire Connectors		X	X
6343	SJTO Service Cord 14 GA 20 ft.	X	X		6310X	Grease Fitting Assortment box		X	
6370	Heat Shrink Tubing Assort. B&W 1/8in & 1/4in supplied 6in	X		X	6332B	Hook-up Wire 16ga blk. 48 ft	X		
6413	Fin. Hex Nut 1/4in-20 zn Pltd.			X	6332R	Hook-up Wire 16ga red. 48 ft	X		
6501	Fin. Hex Nut 1/4in-20 zn Pltd.		X	X	6332W	Hook-up Wire 16ga wht. 48 ft	X		
6503	Fin. Hex Nut 3/8in-16 zn Pltd.		X	X	6333B	Hook-up Wire 14ga blk. 48 ft			X
6642	HH Cap Screw 3/8in-16 x 1in		X		6333G	Hook-up Wire 14ga gm. 48 ft			
6643	HH Cap Screw 3/8in-16 x 1 1/2in		X		6333R	Hook-up Wire 14ga red. 48 ft			X
6701	Flat Washer 3/16in Uss zn Pltd.		X		6333W	Hook-up Wire 14ga wht. 48 ft			X
6702	Flat Washer 1/4in Uss zn Pltd.		X	X	6334B	Hook-up Wire 12ga blk. 48 ft			X

continued



## TESTERS, LEADS, CLIPS, FUSES

### Clips

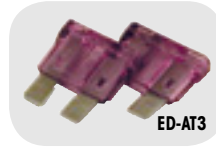
The clips are alligator clips and have vinyl red and black insulators.



CATALOG NO.	DESCRIPTION	UOM	ORDER MULTIPLE
<b>5033</b>	Steel Alligator Clips for use with test probes (.075"-.080"); 1-31/32" long; jaws open 5/16" max., pack of 2 red, 2 black, 4 clips	PK	1
<b>5035</b>	Copper Alligator Clips; 1-31/32" long; jaws open 5/16" max.; crimper slotted screw connection, pack of 2 red, 2 black, 4 clips	PK	1
<b>5036</b>	Steel Test Clips; 20A, 2-7/16" long; jaws open 5/8" max.; crimper slotted screw connection, pack of 1 red, 1 black, 2 clips	PK	1

### Blade (Auto) Fuses

These fuses are used to protect circuits in the wiring harness that are usually found under the hood, in a fuse panel or supplementary panel near the battery. MAX fuses are used in domestic and import vehicles.



CATALOG NO.	DESCRIPTION	UOM	ORDER MULTIPLE
<b>ED-AT3</b>	Blade Fuse – 3 Amp – Purple, pack of 10	PK	1
<b>ED-AT5</b>	Blade Fuse – 5 Amp – Tan, pack of 10	PK	1

### Test Leads

These are replacement leads.



CATALOG NO.	DESCRIPTION	UOM	ORDER MULTIPLE
<b>5031</b>	Low Voltage Test Leads; eight 22" long, color-coded leads with fully insulated alligator clips	EA	1
<b>5041</b>	Small Hook Type Low Voltage Test Leads; retractable hooks, 36" thermoplastic 22 gauge wire, nylon body/plunger, red/black	EA	1
<b>5042</b>	Large Hook Type Low Voltage Test Leads; retractable hooks, 36" PVC insulated 20 gauge wire, nylon body/plunger, red/black	EA	1
<b>5046</b>	Flexible Test Leads; steel alligator clips with vinyl red and black insulators; 36" 20 gauge wire; extremely flexible	EA	1

### Dual Element Fuses – 250V

Provides time delay for temporary over-current conditions and motor running protection for heating and air conditioning equipment. Eliminates unnecessary maintenance from harmless overloads.



CATALOG NO.	DESCRIPTION	UOM	ORDER MULTIPLE
<b>ED-CR15</b>	Dual Element Fuse – 15 Amps, pack of 2	PK	1
<b>ED-CR20</b>	Dual Element Fuse – 20 Amps, pack of 2	PK	1
<b>ED-CR25</b>	Dual Element Fuse – 25 Amps, pack of 2	PK	1
<b>ED-CR30</b>	Dual Element Fuse – 30 Amps, pack of 2	PK	1
<b>ED-CR35</b>	Dual Element Fuse – 35 Amps, pack of 2	PK	1
<b>ED-CR40</b>	Dual Element Fuse – 40 Amps, pack of 2	PK	1
<b>ED-CR45</b>	Dual Element Fuse – 45 Amps, pack of 2	PK	1
<b>ED-CR50</b>	Dual Element Fuse – 50 Amps, pack of 2	PK	1
<b>ED-CR60</b>	Dual Element Fuse – 60 Amps, pack of 2	PK	1

U.L. Class RK-5, Standard for Safety 198E, Current Limiting Fuses, Interrupting Rating 200,000 Amps. rms. A.C.

## WIRE

### TFFN Stranded Hook-Up Wire\*

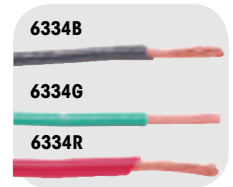
Packaged in handy dispenser bag. Polyvinyl chloride insulation. Wire rating: 600V, 90°C. Insulation: oil resistant nylon coating.



CATALOG NO.	COLOR	GAUGE	STRANDS	O.D.	LENGTH	UOM	ORDER MULTIPLE
<b>60331B</b>	Black, pack of 50'	18	16	.09"	48'	PK	1
<b>60331BE</b>	Blue, pack of 50'	18	16	.09"	48'	PK	1
<b>60331R</b>	Red, pack of 50'	18	16	.09"	48'	PK	1
<b>6332B</b>	Black, pack of 50'	16	26	.10"	48'	PK	1
<b>6332G</b>	Green, pack of 50'	16	26	.10"	48'	PK	1
<b>6332R</b>	Red, pack of 50'	16	26	.10"	48'	PK	1
<b>6332W</b>	White, pack of 50'	16	26	.10"	48'	PK	1

### THHN Stranded Hook-Up Wire\*

Packaged in handy dispenser bag. Polyvinyl chloride insulation. Wire rating: 600V, 90°C. Insulation: oil resistant nylon coating.



CATALOG NO.	COLOR	GAUGE	STRANDS	O.D.	LENGTH	UOM	ORDER MULTIPLE
<b>6333B</b>	Black, pack of 50'	14	19	.11"	48'	PK	1
<b>6333G</b>	Green, pack of 50'	14	19	.11"	48'	PK	1
<b>6333R</b>	Red, pack of 50'	14	19	.11"	48'	PK	1
<b>6333W</b>	White, pack of 50'	14	19	.11"	48'	PK	1
<b>6334B</b>	Black, pack of 50'	12	19	.13"	48'	PK	1
<b>6334G</b>	Green, pack of 50'	12	19	.13"	48'	PK	1
<b>6334R</b>	Red, pack of 50'	12	19	.13"	48'	PK	1
<b>6334W</b>	White, pack of 50'	12	19	.13"	48'	PK	1
<b>6335B</b>	Black, pack of 50'	10	19	.17"	48'	PK	1
<b>6335G</b>	Green, pack of 50'	10	19	.17"	48'	PK	1
<b>6335R</b>	Red, pack of 50'	10	19	.17"	48'	PK	1
<b>6335W</b>	White, pack of 50'	10	19	.17"	48'	PK	1
<b>6360B</b>	Black, pack of 50'	8	19	.22"	25'	PK	1
<b>6360R</b>	Red, pack of 50'	8	19	.22"	25'	PK	1
<b>6360W</b>	White, pack of 50'	8	19	.22"	25'	PK	1